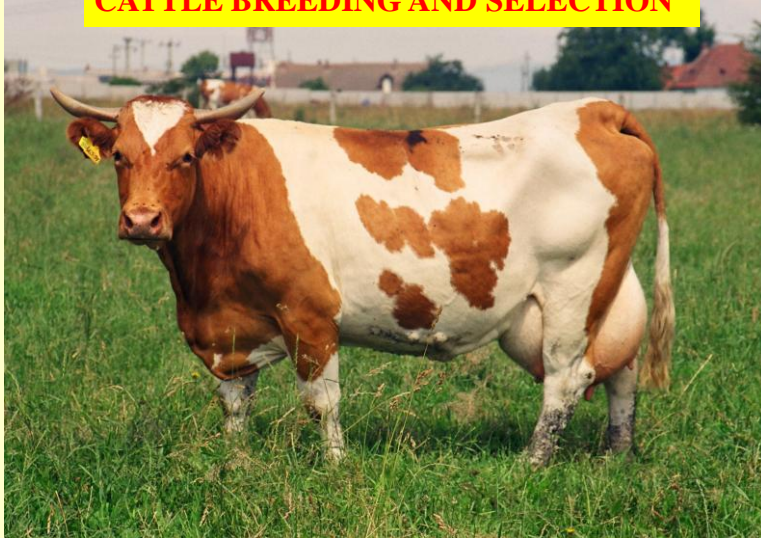




National Institute of Research and Development for Potato and Sugar Beet
<http://www.potato.ro> E-mail: icpc@potato.ro

CATTLE BREEDING AND SELECTION



National Institute of Research and Development for Potato and Sugar Beet
<http://www.potato.ro> E-mail: icpc@potato.ro

- Romanian spotted cattle “GOLDEN BREED” of Romanian stock raising;
- Growth and exploitation of the S.C. Breed within Institute has a tradition of 50 years;
- The original nucleus has undergone improvement by using breeding bulls (350);
- Due to market requirements, the classic mixed meat – milk type, turned through selection and improvement into a mixed milk – meat type (traits 60 % for milk and 40 % for meat);
- Improvement system supposed an infusion crossing with Red Holstein (1 generation) followed by back-cross with German spotted cattle;
- Institute cattle farm is an elite farm placed on the top of the breeding pyramid (milk production 25 % higher than the average breed of the area);
- It is a closed breeding farm that uses scheduled artificial insemination and nominated matching;
- The genetic value of population is given by the number of bull mothers candidate (BMC) and bull mothers (BM).



National Institute of Research and Development for Potato and Sugar Beet
<http://www.potato.ro> E-mail: icpc@potato.ro

Situation of cattle and production achieved

Year	BMC	BM	Total cattle	Cows	Heifers	Milk/cow (liters)
2007	44	15	619	264	61	6328
2008	24	15	454	164	62	6046
2009	18	16	394	170	35	6524
2010	32	24	400	190	40	6500
2011	38	28	395	170	30	6527



National Institute of Research and Development for Potato and Sugar Beet
<http://www.potato.ro> E-mail: icpc@potato.ro

- The SC farm – partner of the Romanian – German promotion project of milk quality (2006-2010)
- The control methodology of milk production was conducted in accordance with ICAR (International Committee for Animal Recording) using A4 method for 28 days
- After four years project:
 - Milk was positioning in a class of quality according to EU standards
 - Less than 100.000 bacteria / ml of milk
 - Less than 400.000 somatic cells /ml of milk
- The cattle unit has developed consulting work for farmers
- Collaborated with agricultural universities to sustain nutritional Studies on Romanian spotted cattle





National Institute of Research and Development for Potato and Sugar Beet

<http://www.potato.ro> E-mail: icpc@potato.ro

TURKEYS BREEDING AND SELECTION

- Growth and exploitation of the turkeys within Institute has a tradition of 45 years
- The only unit in Romania dealing with turkey breeding
- The biological materials represents the national genetic heritage
- There was carried out research work on:
 - selection
 - physiology and biology
 - research projects



National Institute of Research and Development for Potato and Sugar Beet

<http://www.potato.ro> E-mail: icpc@potato.ro

RESULTS

- 7 lines of turkeys were created from which 3 are as pending patents (2012)
- Maintaining and improving works are continuously undertaken and dialele crossing is done ever new generation
- Meat hybrids are intended to increase precocity and growth rate, brest size and meat quality indices
- Dissemination of biological material within farms and micro-farms (4000 – 5000 chickens of 1 day and 2000 – 3000 chickens of 6 to 8 weeks)
- These lines are parents for getting hybrids
- Biological materials characterized by adaptability and resistance to stress





National Institute of Research and Development for Potato and Sugar Beet
<http://www.potato.ro> E-mail: icpc@potato.ro

FUTURE AND PERSPECTIVES

- **Maintaining the national genetic heritage**
- **Development of new hybrids**
- **Special emphasis will be laid on increasing precocity, growth rate and improving feed conversion**
- **New methods and techniques in breeding and incubation**

